



TECHNICAL DATA

BEML BP70 PIPE LAYER

- BEML BS6D170-1 Diesel Engine
- Powershift Transmission
- Wet type inter-connected steering clutches and brakes
- Sturdy construction
- Segmented sprockets
- Grooved type floating seals
- Hydraulically actuated counter weights
- Automatic Kickout device for Boom
- Pilot operated work attachment

Flywheel Power (net) : 242 kW (324 hp) @ 2000 rpm
Max. Lifting Capacity : As per lifting performance curve.

BEML BP70

PIPE LAYER

Salient Features

- BEML B6D170-1 Diesel Engine : Features a generous HP to weight ratio for wide range of pipelaying work.
- Powershift transmission :
Smooth and responsive power shift with single-lever control for instant speed and directional changes.
- Wet type inter-connected steering clutches and brakes :
Interconnected wet-type steering clutches and brakes for easy operation and long service life. Steering clutches requires no adjustment
- Sturdy construction :
The boom is welded box section and operated by wire cables. Track roller frames are made of high tensile steel of maximum rigidity.
- Segmented sprockets :
Sprockets with bolt on rim segments permit quick onsite replacement without track removal.
- Grooved type floating seals :
These special seals are used in idlers, track and carrier rollers to keep dirt out and lubricant in for extended undercarriage life, as well as reduced maintenance cost.

Faster operation due to 2 raise and lowering speeds.

Automatic kickout device for Boom

Hydraulically actuated counter weights for increased stability

- Lifting Performance :
Maximum lifting capacity as per lifting performance curve to cater wide range of pipe laying work with joystick control.

Material and specifications are subject to change without notice. Illustrations may include optional equipment & accessories

BEML BP70

PIPE LAYER

Accessories & Dimensions

STANDARD EQUIPMENT

Hook & Boom Winches
Counter weight mechanism
6.2m boom with cables

Hydraulic track adjusters
Bottom Guards (3 pieces)
Adequate lighting system

OPTIONAL ATTACHMENTS

Rops Cabin
Insulated Canopy
Safe Load Indicator System

Air conditioner with heater
Longer Length Boom (7.3m)

ENGINE

Make _____ BEML
Model _____ BS6D170-1
Type _____ Diesel, 4 stroke, water cooled,
direct injection, turbocharged
Net power (fhp) _____ 242 kW (324hp) @ 2000 rpm
(ISO: 9249)
Maximum Torque _____ 80.0 kg-m @ 1100rpm

No. of cylinders _____ 6 inline
Bore x Stroke _____ Ø170 x 170 mm
Displacement _____ 0.023150 m³
Electricals
Alternator _____ 24 V, 55 A/140 A
Starting motor _____ 24 V, 9,0 kW
Battery _____ 2 x 12 V, 200 Ah

TRANSMISSION

Torque Converter
Model _____ TCS43-4C
Type _____ 3 element, single stage, single
phase
Stall ratio _____ 2.4
Transmission
Model _____ Planetary gear, Power Shift
3 forward / 3 reverse

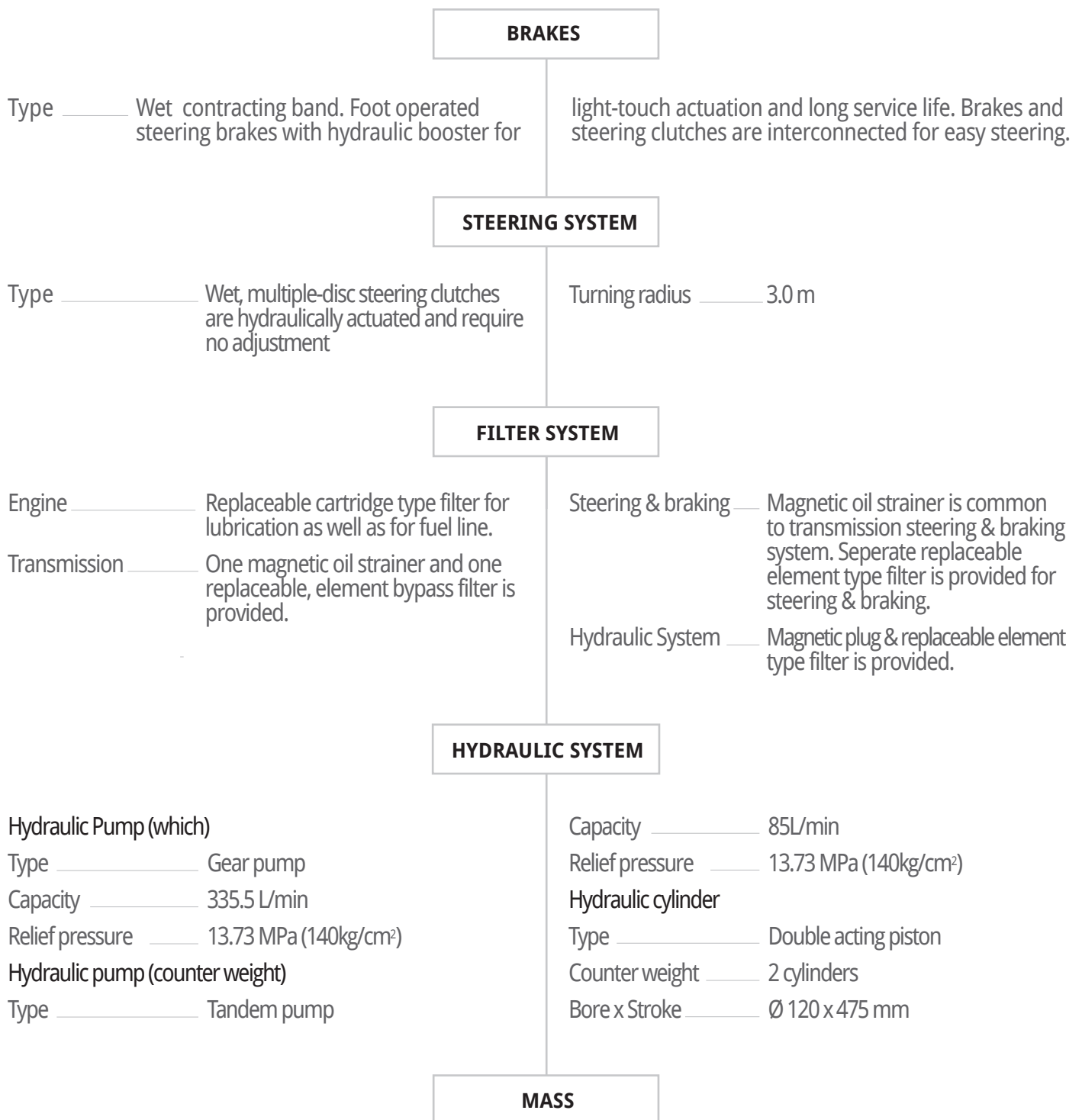
Final drive
Type _____ Spur gear, double reduction
Lubrication _____ Splash type
Total reduction _____ 40.104
Travel speeds m/sec (km/h)

Range	Forward	Reverse
1st	0-1.03 (0-3.7)	0-1.25 (0-4.5)
2nd	0-1.89 (6.8)	0-2.3 (0-8.2)
3rd	0-3.3 (0-11.8)	0-3.8 (0-13.7)

BEML BP70

PIPE LAYER

Technical Specifications



Shipping Mass (Basic tractor with lubricating hydraulic, cooling systems and 10% of fuel capacity) _____ 46.000 kg

BEML BP70

PIPE LAYER

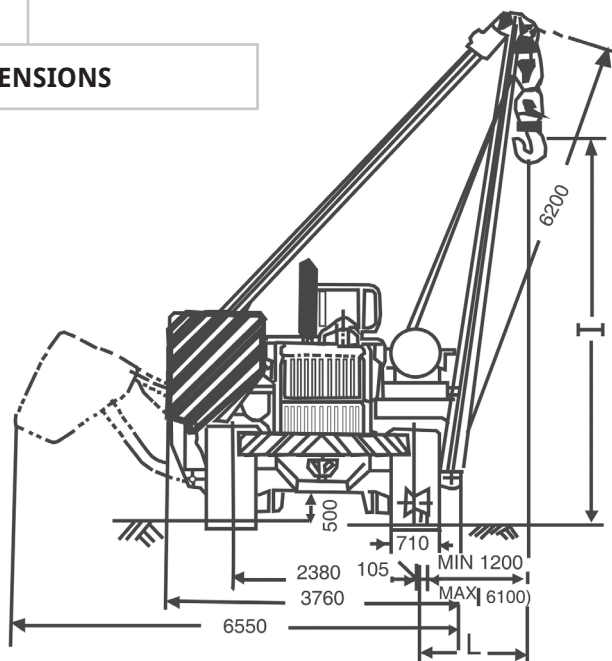
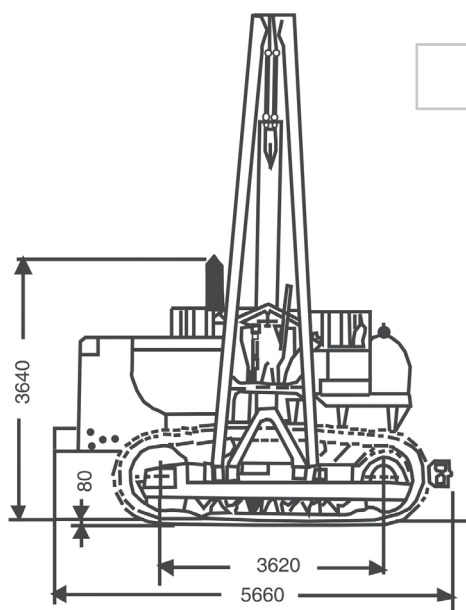
Technical Specifications

DIMENSIONS & OPERATING DATA

Overall length	5660 mm
Overall width	3760 mm
Overall height	3640 mm
Operating data	
Pipe laying equipment	
Crane	see chart
Boom overhang (STD)	1.22 m to 6.1 m
Hook speed (1st layer)	
Raise - 1st	6.5 m/min
- 2nd	13.0 m/min
Lower - 1st	6.5 m/min
- 2nd	13.0 m/min
Boom	
Type	Welded box section and operated by wire cables
Length	6200 mm (optional 7300 mm)
Weight	1600 kg

Winch	
Type	Hydraulically operated, two speed, reversible
Driving System	Powered continuously by hydraulic pump
Drum brake	Automatic braking system
Transmission	Built in planetary system
Winch drum	
Hook (dia x width)	Ø 323.85 x 431.8 mm
Boom (dia x width)	Ø 323.85 x 431.8 mm
Wire rope	
Hook (dia x width)	Ø 20 x 100 mm
Boom (dia x width)	Ø 20 x 55 mm
Counter Weight	
Type	Segmented plate type, hydraulically actuated
Weight (incl. bracket)	9500 kg ± 6%
No. of plates	10
Safety equipment boom	Automatic max. kick-out device

DIMENSIONS

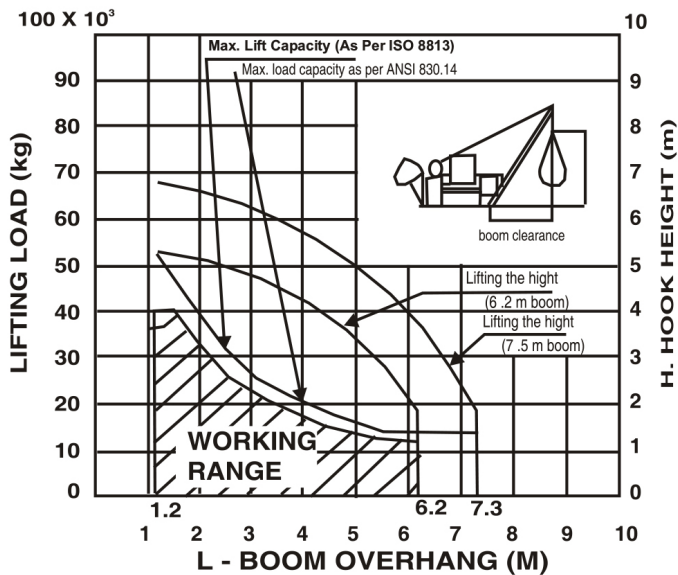


BEML BP70

PIPE LAYER

Technical Specifications

CHART



Lifting performances (as per ISO 8813)

Based on the firm level ground operation and standard 9500 kg counter weight fully extended, 6.2 m boom, 20 mm dia wire rope, 27000 kg min. breaking strength 3-part load line.

UNDER CARRIAGE

Suspension	Non-Oscillation type equalizer bar
Track-frame	Box section, high tensile strength steel construction
Track rollers	8 nos. each side
Carrier rollers	2 nos. each side
Track shoes	45 nos. each side

Track pitch	2380 mm
Grouser-height	80 mm
Shoe width	710 mm (std)
Ground pressure	80.4 kPa (0.89 kg/cm ²)
Ground contact area	5.140 m ²

COOLANT & LUBRICANTS CAPACITY (Refill)

System	Litres
Cooling system	165 (165)
Fuel tank	600 (600)
Transmission, bevel gear case torque converter & steering case	185 (135)

System	Litres
Final drive case (each side)	55 (55)
Hydraulic tank	185
Engine lub oil	58 (43)

BEDELCO

Rue de l'Environnement 22

4100 Seraing - Belgium

Tel : +32 4 330 18 60

Fax : +32 4 330 18 66

E-mail : info@bedelco.eu

Web : www.bedelco.eu